

# TrackView Pro Data Transmitters for Environmental Monitoring

## Long Wireless Range and Wired Data Transmission solutions

The TrackView Pro data transmitters offer the ultimate solutions for the most demanding and unique requirements. The Smart Probe USB connectors offer the flexibility to measure and track all environmental parameters with the ultimate piece of mind. Temperature, humidity, CO<sub>2</sub> content are some of the parameters available for logging.

All the ISO traceable data is captured and reliability transmitted over long distances when the TrackView Pros are used wirelessly. Ultrafast data capture and transmission rates are available with the PoE TrackView Pro version.

Utilizing the numerous functions of the FDA 21 CFR, Part 11 compliant EMSuite software, data is easily analysed and distributed through various report options.



### Key Features & Benefits

- ✓ FDA 21 CFR Part 11 compliant
- ✓ Total data integrity with two-way wireless communication
- ✓ Universal transmitter for all your environmental parameters
- ✓ 2 USB connections for interchangeable SMART probes
- ✓ Up to 100m Long distance data transmission to Access Point for wireless TrackView Pro
- ✓ TrackView Pro version with ethernet port for PoE or PoE/ LAN access
- ✓ 64,000 Data point memory capacity
- ✓ Auto detection for a quick and easy set-up/ installation of new device

### Typical Applications

- ✓ Ambient conditions
- ✓ Refrigerators
- ✓ Freezers
- ✓ Incubators
- ✓ Environmental chambers



Secure 2-way  
data/ integrity



Compatible with  
TrackView Pro Base  
Station and EMSuite 1.0



Long Range  
transmission



Interchangeable  
Sensors



Temperature from  
-196°C to +125°C

Interested in this  
product?

[Contact Sales](#)  
[Today](#)



### Manufactured by Ellab

Disclaimer: The information contained herein is believed to be reliable. Ellab A/S is not responsible for any incorrect or incomplete information on this datasheet and the information or product maybe changed without notice. Customers should obtain and verify the latest relevant information before placing orders for Ellab products.

Version: 1 EC000000

**ellab.com**

Tel: +45 4452 0500 | Email: [contact@ellab.com](mailto:contact@ellab.com)

## Technical Specs

Communication	TrackView Pro	PoE TrackView Pro
Control and data transfer interface	Radio communication via Access Point	Radio communication via Access Point Or Ethernet
Communication type	Lora Radio 868-920kHz	Lora Radio 868-920kHz Or 100Mbit Ethernet
Communication connector	N/A	RJ45
Wireless Communication range * Line of sight with open Fresnel zones	Up to 100 m./328 ft.*	

Memory	TrackView Pro	PoE TrackView Pro
Memory Capacity	64,000 Data Points	
Minimum Sample Rate	1 Minute	1 Minute or 1 Second with PoE
Maximum Sample Rate	12 Hours	

Supported SMART probes (Separate purchase)	TrackView Pro	PoE TrackView Pro
SMART Temperature	-20.. +60°C or -196..+125°C ASK For up to 200°C version?	
Relative Humidity	0..100% (non-condensing)	
CO2	0..+20%	
Differential Pressure	±50Pa or ±1250Pa	
Analog Input Resolution: 8 bit, 12 bit or 16 bit? 8 bit is not enough?	4-20mA or 0-10V	4-20mA or 0-10V (+24VDC Available when PoE is connected)
Digital Input	To be driven by relay	
Digital Output	r	a
Door Switch	a 3m Cable Is it fixed? With open end if customer needs a longer distance or big door?	

Power Supply	TrackView Pro	PoE TrackView Pro
Batteries	2x 1.5V AA Alkaline or Lithium	
Battery hours	>12month* * Sample rate 1min & transmit rate 5min Temp. Sensor only.	
PoE voltage	N/A	36-57VDC
PoE Standard	N/A	IEEE 802.3af

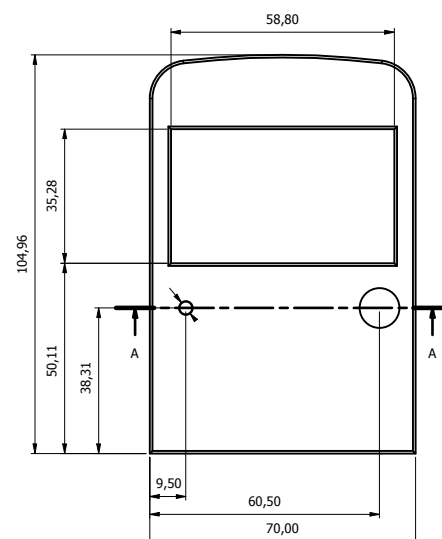
Mechanics	TrackView Pro	PoE TrackView Pro
Material	PC/ABS	
Dimensions (H x W x D)	132 mm (134 mm incl. wall mount bracket) x 80 mm x 31 mm (37 mm incl. wall mount bracket)	
Weight With Battery	210 g	225 g
Wall mount bracket	Included (optional magnets)	

Environmental conditions	TrackView Pro	PoE TrackView Pro
Operating Environment Temperature Range	-20°C to 60°C	
Operating Environment Humidity Range	0 to 90% non-condensing	
Storage Temperature (Min-Max)	-20 to +60°C	
Storage Humidity (Min-Max)	0 to 90% non-condensing	
International Protection Rating (IP-class)	IP54 (IP53 for Logger with PoE)	

Compliance & Directives	TrackView Pro	PoE TrackView Pro
Operating Frequency TelCom approvals / Radio approvals	868MHz EU 915MHz USA FCC / Canada IC 920MHz Japan ARIB	
Product Safety Compliance / CE-Conformity	Product is CE and UKCA marked	
EMC and ESD compliance	In Compliance with EMC Directive	
Recyclability / WEEE compliance	In Compliance with WEEE Directive	
Declarations & Certification / RoHS Compliance	Product is CE and UKCA marked.	

Order Code	TrackView Pro	PoE TrackView Pro
TrackView Pro Transmitter - 868MHz for EU requirements	33047341	33043841
TrackView Pro Transmitter - 915MHz for US/ Ca requirements	33047342	33043842
	33047343	33043843

## Technical Drawing



## Manufactured by Ellab

Disclaimer: The information contained herein is believed to be reliable. Ellab A/S is not responsible for any incorrect or incomplete information on this datasheet and the information or product maybe changed without notice. Customers should obtain and verify the latest relevant information before placing orders for Ellab products.

Version: 1 EC000000

**ellab.com**

Tel: +45 4452 0500 | Email: [contact@ellab.com](mailto:contact@ellab.com)